

Accounting Class Capstone Project

A Final Project or End-of-the-Year Project
...an Accounting Journey like no other!

**Entrepreneurship
Profile**

Chart of Accounts

Assess Supplies

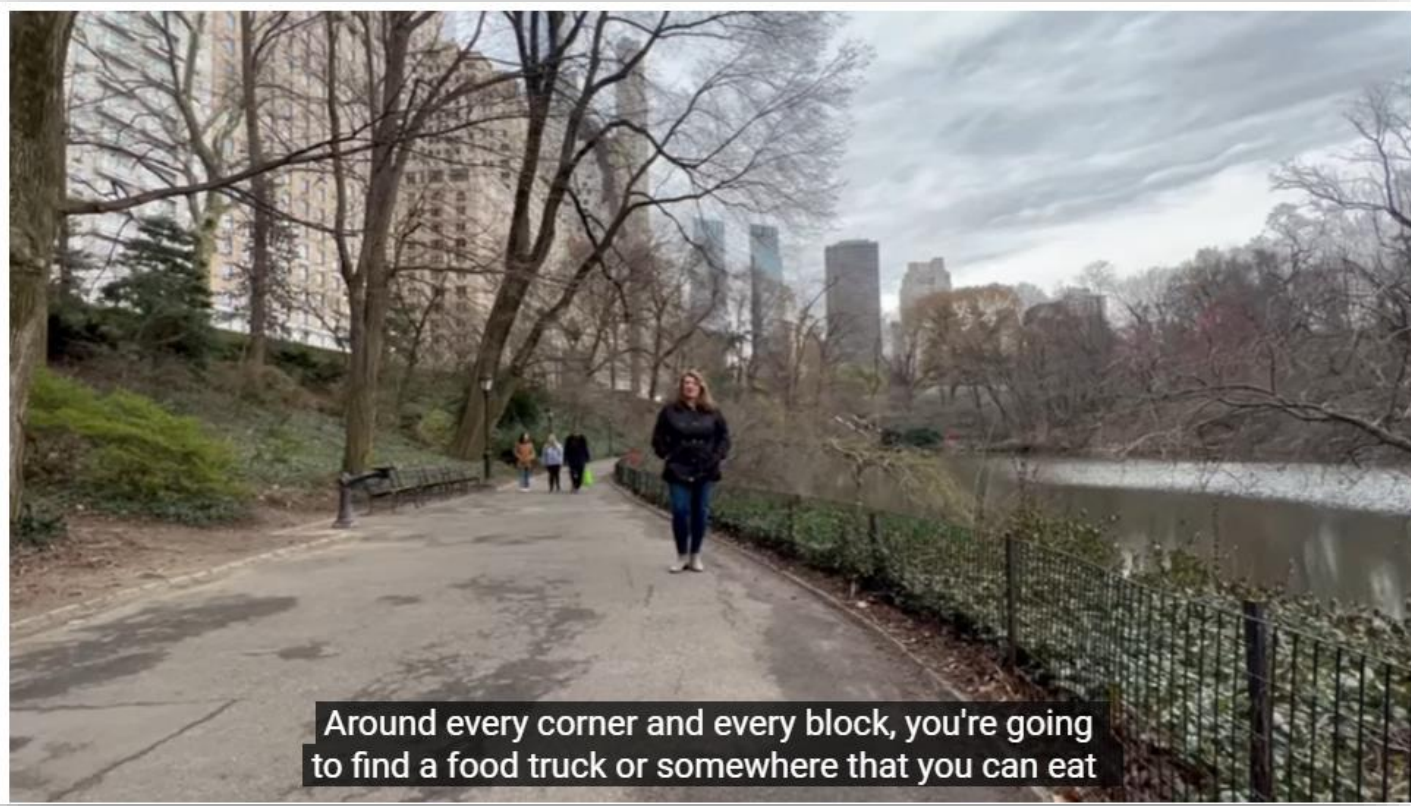
Assess Equipment

**Net Worth
Statement**

Income Statement

Balance Sheet





Around every corner and every block, you're going to find a food truck or somewhere that you can eat

**This project file is FULL of videos that were filmed in the 'Simple Startup Capital of the World'...
NEW YORK CITY!**



milkshake machine, things that you would use year after year, that over time you would depreciate,

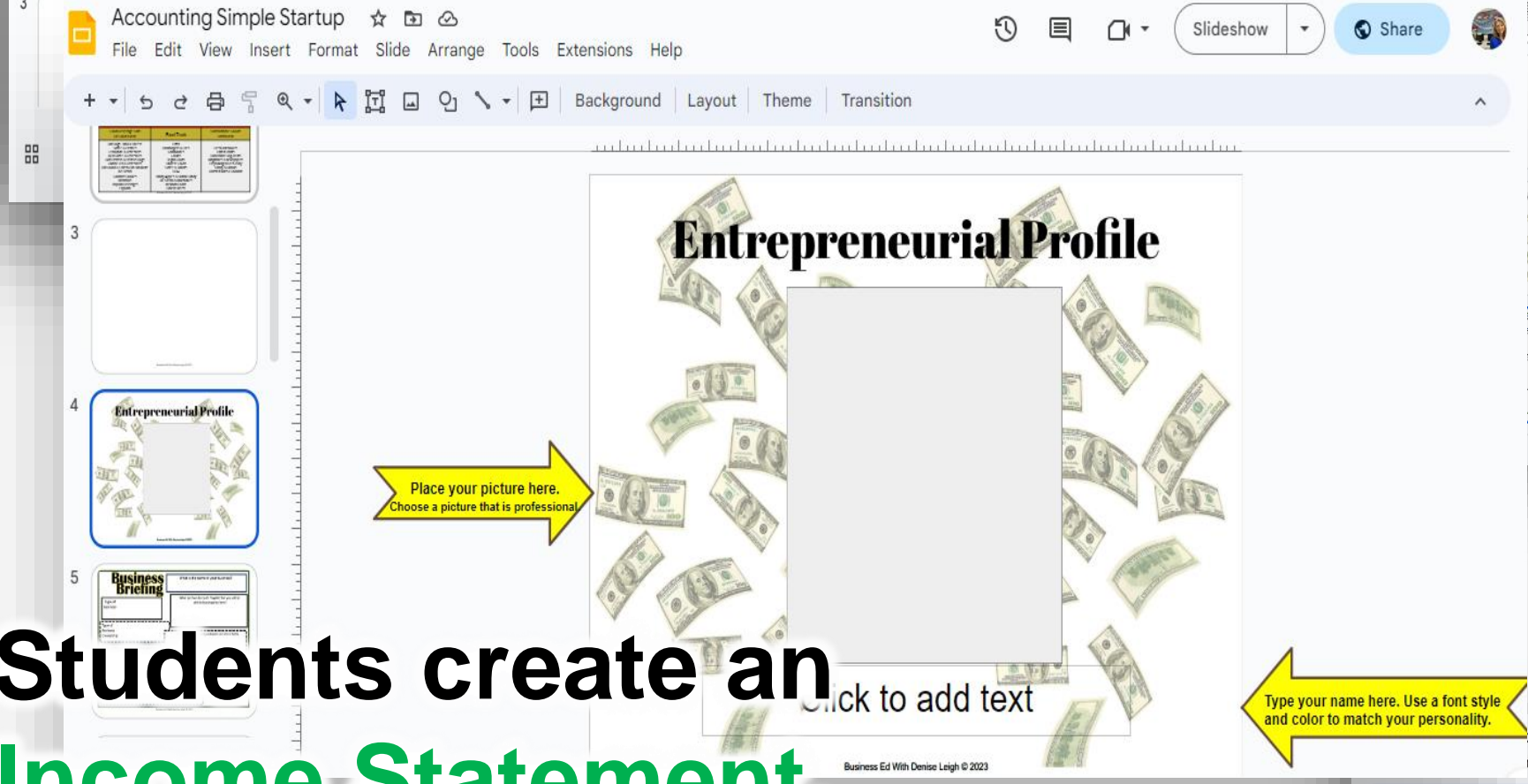
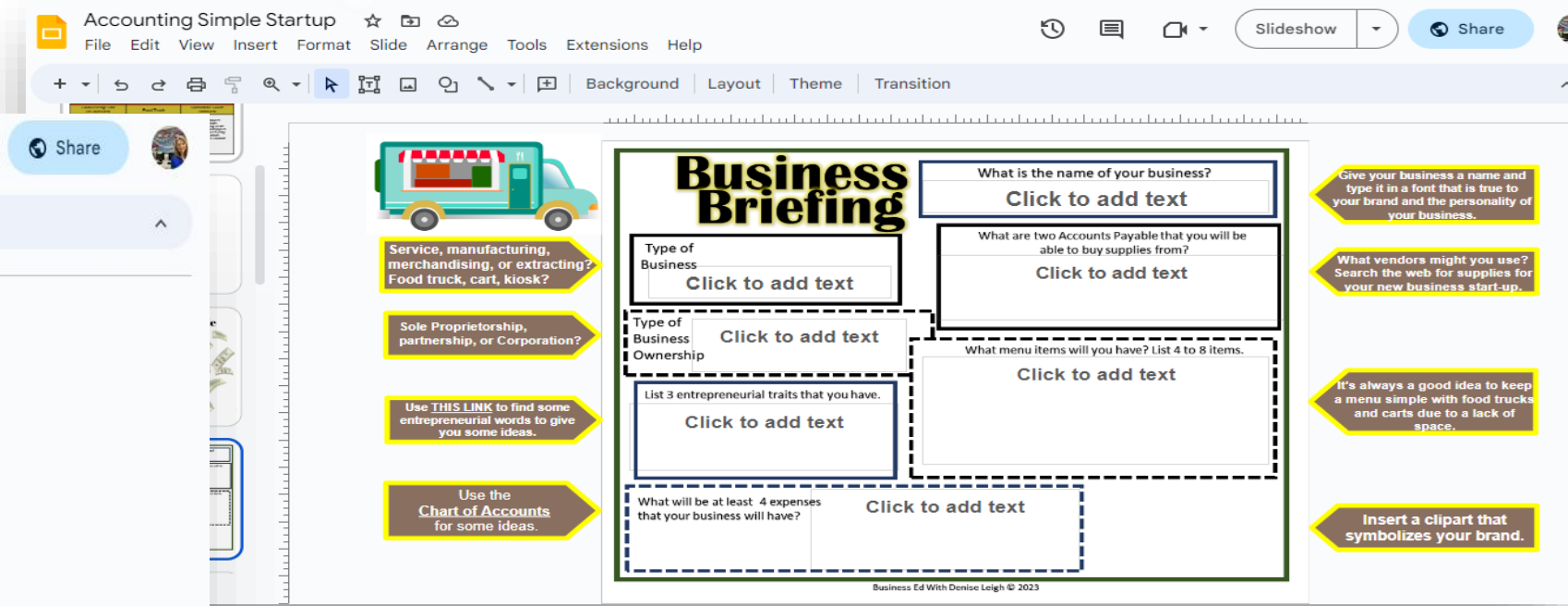
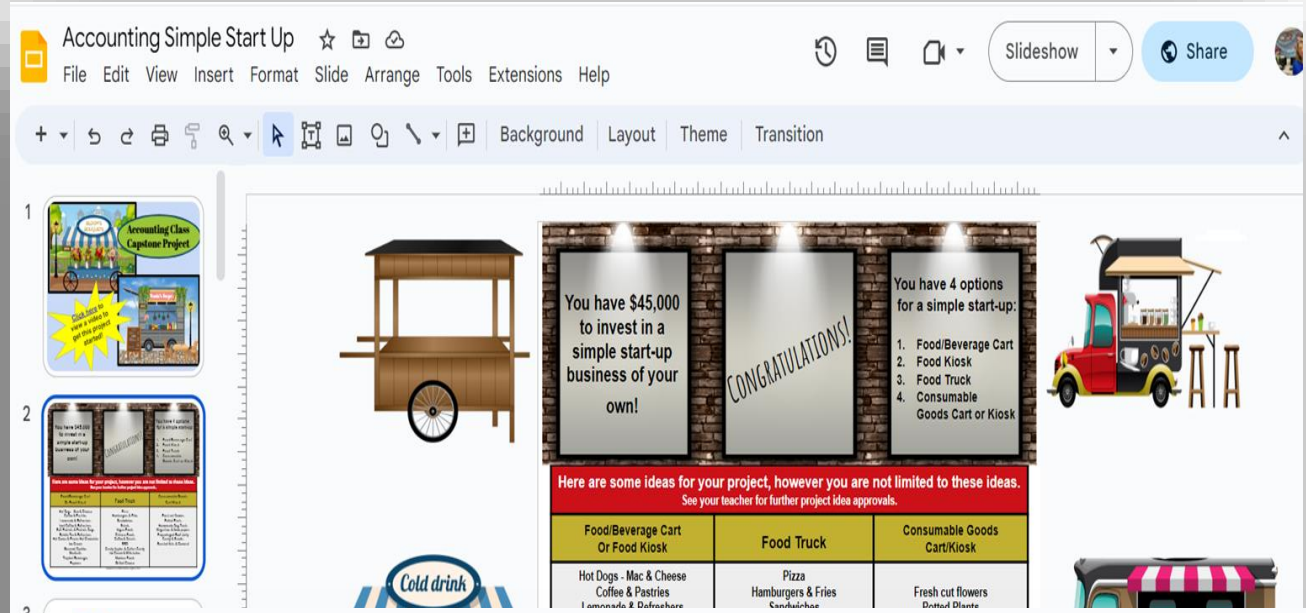


The outside of your food truck and the appearance of it is unbelievably important. Go to the clipart

**THIS
is as
REAL-WORLD
as it gets!**

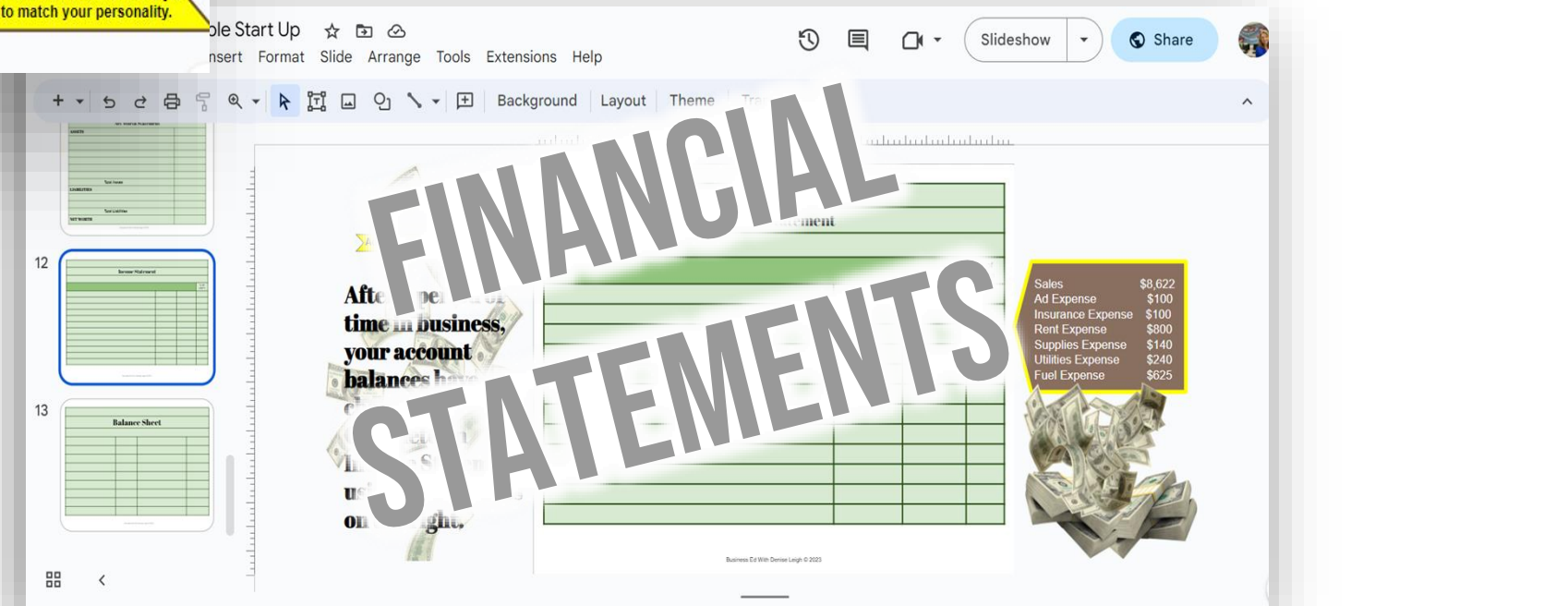
Students are given options as to what simple startup they want to choose:

Kiosk, Cart or Food Truck



Accounting students make entrepreneurial decisions.

Students create an Income Statement, Balance Sheet, & Net Worth Statement.



Accounting Simple Startup

File Edit View Insert Format Slide Arrange Tools Extensions Help

Background Layout Theme Transition

Setting Up My Business

Supplies

SUPPLIES

Supplies are consumables. Because you consume them, they need to be purchased over and over again. Some examples of supplies are:
 Paper plates
 Napkins
 Cups
 Condiments
 Straws
 To-go containers

Click Here to learn about supplies.

Copy and paste images of supplies that you would need for your first busy month in business. Drop the copied images in the space to the left. Insert text boxes with prices for each item. Be sure to spend at least \$600 but do not exceed a \$850.00 budget for start-up supplies. Make the images large enough to fill the space. Be sure to total your supplies and highlight the total in yellow.

Student entrepreneurs ‘shop’ for supplies (consumables) and equipment (long-term assets)

Accounting Simple Startup

File Edit View Insert Format Slide Arrange Tools Extensions Help

Background Layout Theme Transition

Setting Up My Business

Equipment

EQUIPMENT

Equipment is used over and over again and is often used for years. Some examples of equipment would be:
 Stove
 Cooler
 Oven
 Fryer
 Pot & pans
 Utensils

Click Here to learn about equipment.

Shop the web to find vendors that might sell equipment to a business like yours. Look at the description of the food truck that you ‘purchased’ to be sure that you are not buying anything that comes with it. **CLICK HERE** to get some ideas of equipment that you might need.

Copy and paste images of equipment that you would need for your your type of business. Drop the copied images in the space to the left. Insert text boxes with prices for each item. Do some Internet research to find out what you may need. Spend at least \$1,000 but do not exceed a \$2,000 budget for start-up equipment. Make the images large enough to fill the space. Be sure to total your equipment and highlight the total in yellow.

Students ❤️ picking out their supplies and equipment for their simple startup! They must stay within their budget!

Students create an Income Statement, Balance Sheet, & Net Worth Statement

Net Worth Statement

Assets-Liabilities=Net Worth

CLICK HERE for an example of a NET WORTH STATEMENT

Type right in the form

Add your business name.

Net Worth Statement	
ASSETS	
Cash	\$22,800
Petty Cash	\$100
Food Truck/Cart (use sale price)	
Supplies (use your supplies amount)	
Equipment (use your supplies amount)	
Prepaid Insurance	\$650
Total Assets	
LIABILITIES	
Liability #1	\$1,925.00
Liability #2	\$4,732
Total Liabilities	
NET WORTH	

The balances for your two liabilities
 Liability #1 \$1,925.00
 Liability #2 \$4,732
 The names of the payables are on your Business Briefing page.

Each project page border is full of **tips, hints, & resources** that will help your students be successful in this **Simple Startup Project.**

Accounting Simple Start Up

File Edit View Insert Format Slide Show Tools Extensions Help

Background Layout Theme Transition

12

13

Be sure to add a heading.

Add the specific date of the sheet.

Create a Balance Sheet.
Use the balances to the right and use your liability account names for your payables.

Remember, you must take the capital amount and subtract your drawing and add your Net Income (from the balance sheet).

Capital
-Drawing
+Net Income
Capital that you use on your balance sheet.
(Since the Drawing is added & Net Income is subtracted from the capital, they are NOT listed on the Balance Sheet)

Balance Sheet

Your balances and accounts after a period of time in business are as follows...

Assets

Cash	\$28,700
Food Truck/cart	\$21,350
Equipment	\$1,800
Supplies	\$420
Prepaid Insurance	\$450

Liabilities

Accounts Payable	\$924
Accounts Payable	\$710

Owner's Equity

Your name, Capital	\$46,269
Your name, Drawing	\$1,800

Business Ed With Denise Leigh © 2023

Choose to print the files after completion for a beautiful display of student achievement.



← **Printed Full Page**

← **Printed 2 per Page**

← **Printed 4 per Page**

Hi! My name is Denise Leigh. I have been teaching Business Education for over 25 years! I love collaborating with business educators all over the world. I am a 2022 Pennsylvania Teacher of the Year Finalist and relentless lifetime learner and lover of everything education. Engaging students and connecting them to their world is my jam! Thank you for exploring my resources and sharing my passion for BUSINESS EDUCATION!

Denise Leigh is an expert on student-led instruction. She was featured on CBS Pittsburgh for her City Collaborative™ Project-Based Business Education (PBL) Classroom.

